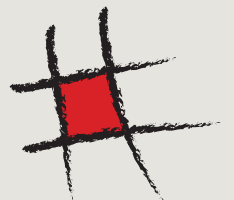




# Luxx



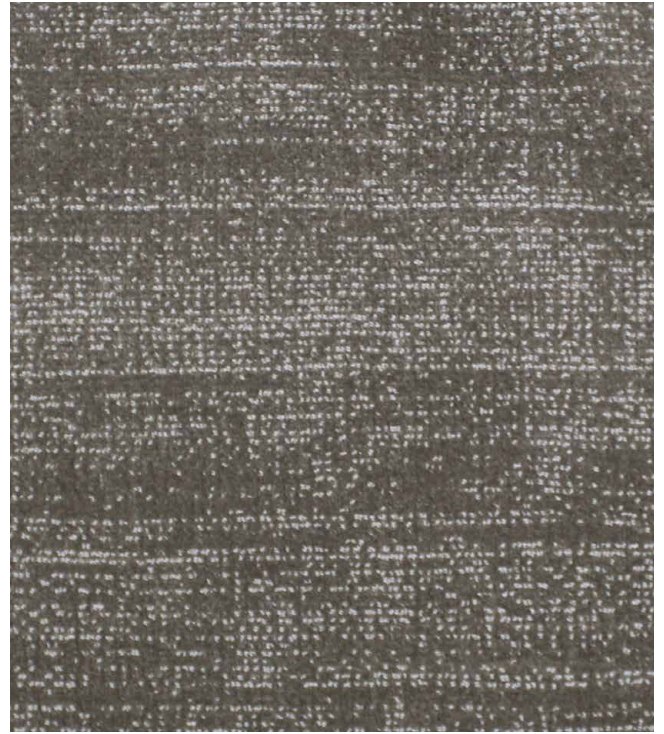




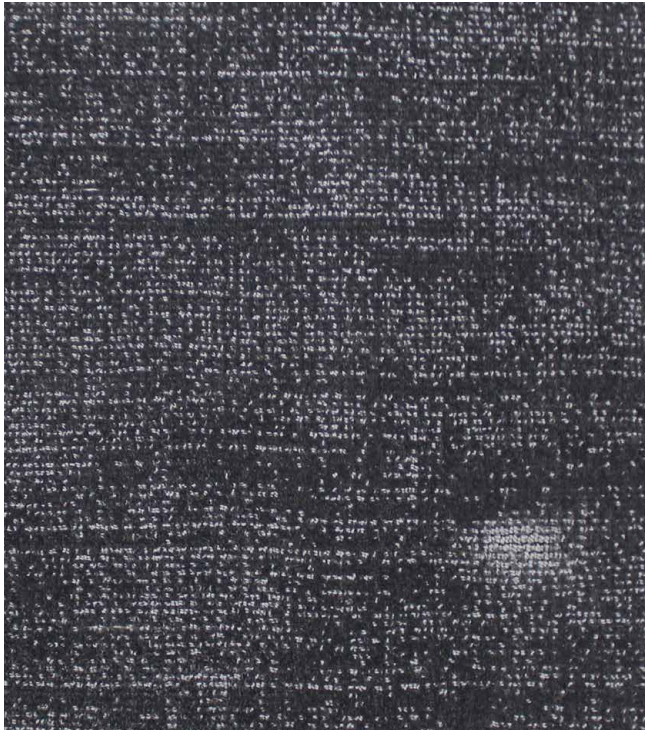
# Luxx



Beige 530



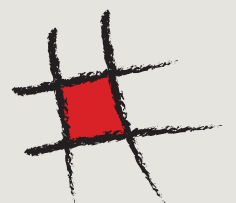
Ecrú 570



Anthra 640



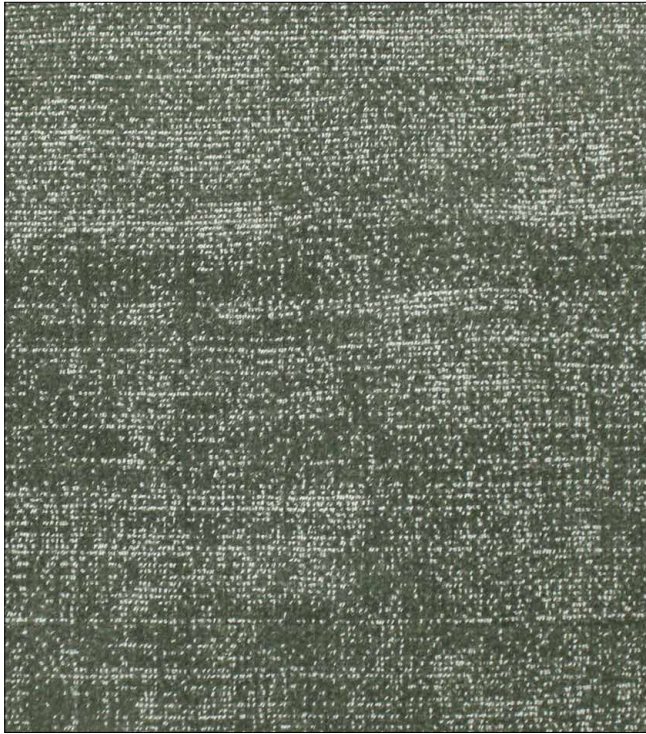
Amber 090



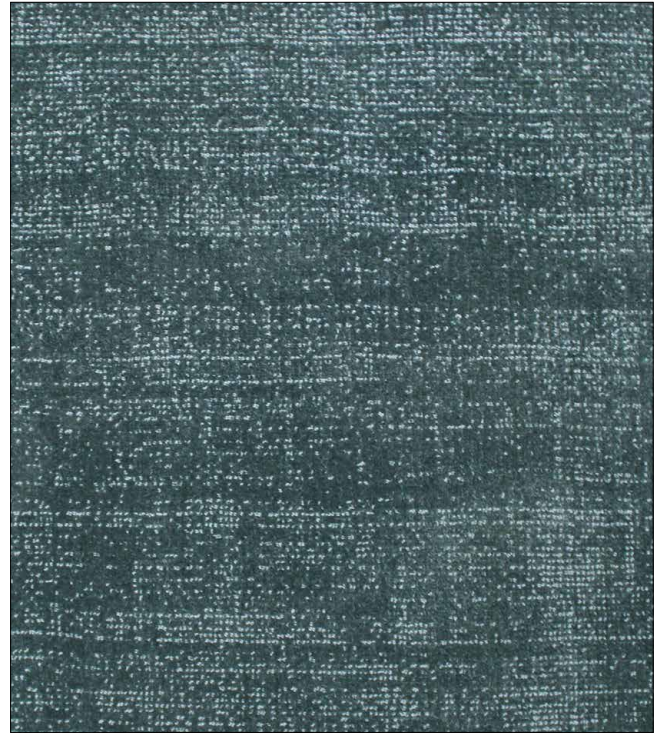




# Luxx



Green 480



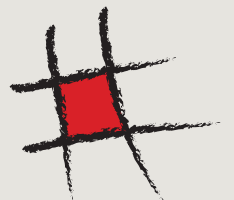
Grey Green 630



Mustard 180



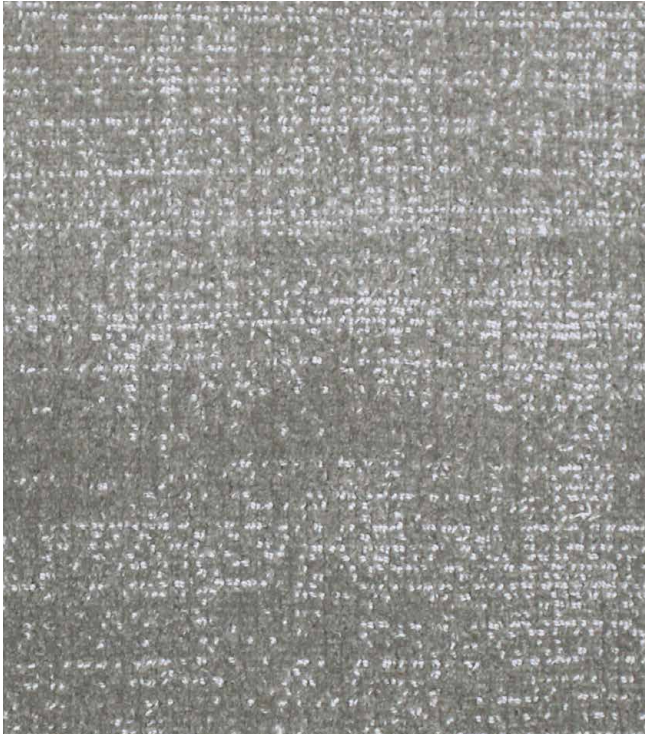
Navy 380







# Luxx



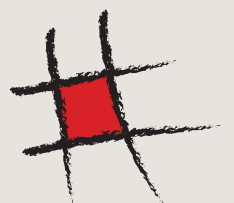
Seal 550



Opal 050



Cream 020







# Luxx



## SPECIFICATION

Construction	: Hand Woven Loop Tip Shear
Pile Material	: Polyamide Solution Dyed
Secondary Backing	: Cotton Cloth
Pile Weight	: ca. 2.20 kg / sq mtr +/- 7.5%
Total Weight	: ca. 3.20 kg / sq mtr +/- 7.5%
Pile Height	: ca. 5 mm +/- 7.5%
Total Height	: ca. 8 mm +/- 7.5%
Usage Classification EN 1307:2014	: Heavy Domestic
Comfort rating EN 1307: 2014	: LC 5
Static Electricity Charge	: Antistatic
Colour Fastness to Light ISO 105 B02:2013	: 5
Rubbing Fastness - Dry ISO 105-X12:2016	: 5
Rubbing Fastness - Wet ISO 105-X12:2016	: 5
Colour Fastness to Water ISO 105-E01:2013	: 5
TOG Rating	: 1.14
Burn behaviour ASTM. D2859	: 16 CFR
Stair suitability	: Yes
Widths	: 5 mtr +/- 1%
Cut length service	: Yes
Standard rug sizes	: No
Bespoke rug service	: Yes

**Matching** : This sample may not be from the same batch as current stocks and should be used only as a guide.

**Installation** : Professional installation is recommended and essential to a good quality underlay. Avoid exposure direct sunlight. Areas that might receive prolonged exposure to direct sunlight should be protected by the use of blinds or curtains.

**Cleaning** : Professional cleaning recommended.

**Maintenance** : To maintain your carpets appearance it is recommended that it is vacuumed at least three times per week to remove particles of dirt and dust. It should be noted that overtime foot traffic will flatten the pile in main walkways, causing areas of differential wear. This can cause the carpet to show areas of light and dark shading, this happens to all quality carpets and would not be accepted as a basis for any complaint.

